



Indoor Touch screen Video Totem for digital signage



User manual



**Vertical digital signage totem for indoor use, in covered and protected areas.
Full HD display: 1920 * 1080 pixels - 16/9 format, 500 cd/m² Touch screen function**

Please read this manual carefully before installing and using the totem!

TABLE OF CONTENTS

Overview	Page	12
Technical specifications	-	13 - 14
EEC and RoHS2 compliance	-	14 - 15
Opening the Box and Assembly	-	16 - 17
Warning and Safety Precautions	-	17 - 18
Connecting and Linking	-	19
Remote control	-	20
Configuration and settings	-	20

OVERVIEW

1. Vertical digital signage system in public spaces for indoor, covered and protected use.
2. Main elements: a vertical steel structure with an aluminium contour, housing an LCD screen and an electronic circuit, a base allowing the independent positioning of the totem on the ground.
3. Full HD 1920 x 1080 pixel LCD screen, 500 cd/m² brightness, specially developed for public display. High display quality, no flickering, low radiation, considerably reduces eye strain, high brightness and contrast, wide viewing angle.
4. Progressive image processing and dynamic contrast and motion compensation technology.
5. Possibility to connect a USB mouse and keyboard like on a tablet.
6. Possibility to connect an Android or Windows mini-PC to the 230V and HDMI sockets inside.
7. 10-point infrared touch sensor with connection via USB

TECHNICAL SPECIFICATIONS

Model		161-4300T	161-5500T
Screen size		43"	55"
Dimensions and weight	Product dimensions (H x W x D)	1760 x 640 x 70 mm	1900 x 790 x 440 mm
	Packaging dimensions (H x W x D)	1880 x 740 x 240 mm	2182 x 945 x 250
	Weight of the product only	50 kg	86 kg
	Weight with packaging	67 kg	101 kg
a	Main structure	Steel structure + aluminium (frame)	
	Surface treatment	Rustproof paint	
	Colour	Black	
	Protective glass	Single-layer tempered glass on the entire face	
Display screen	Specifications	43" IPS LCD screen Professional quality for public display	55" IPS LCD screen Professional quality for public display
	Brightness (cd/m ²)	500	
	Resolution (pixels)	FULL HD (1920 x 1080)	
	Image format	16/9	
	Viewing area (mm)	941.2 x 529.4	1209.6 x 680.4
	Viewing angle	89/89/89/89	
	Contrast ratio	1400 : 1	
	Colours	16.7 millions	
	Working life (h)	50 000 h	

Screen size		43''	55''
Touch screen System	Type of sensor	10-point infrared	
	Connection	USB Internal	
External connection	HDMI	Possibility to connect a mini PC inside the totem through the HDMI and 230v sockets inside, antenne Wi-Fi	
Audio	Speaker	10 W x 2	
Power supply		AC - 100/240V (50/60Hz) ; Prise Européenne type « F »	
Energy consumption		≤ 80 W	
Cooling system		Natural air cooling	
Utilisation		Indoor public display, covered and protected environment	
Operating environment		Temperature: 0°C ~ 40°C and relative humidity: 20% ~ 80% (non-condensing)	
Storage environment		Temperature: -10°C ~ 60°C and relative humidity: 10% ~ 60% (non-condensing)	
Installation		Standing on stable, dry ground	
Accessories		Power cord, safety key, user manual, remote control, set of washers and screws with Allen key	

EEC conformity

The materials used in the manufacturing process and present in the finished product comply with the following European directives and standards :

2014/35/CE – LVD
 2014/30/CE – EMC
 2011/65/EU and amendment (EU)2015/863

EN 62368-1 : 2014 (second edition)
 EN 55032 : 2015/AC :2016-07
 EN 55035 : 2017
 EN 61000-3-2 : 2014, EN61000-3-3 :2013
 IEC 62321-2 : 2013
 IEC 62321-3-1 : 2013
 IEC 62321-8 : 2017



This label indicates compliance with the Waste Electrical and Electronic Equipment Directive 2012/19/EU (WEEE).

It thus indicates the obligation NOT to dispose of this equipment with the municipal waste but to use the return and collection systems in accordance with the local law in force.

If the batteries, accumulators and button cells included with this equipment are marked with the chemical symbol Hg, Cd, or Pb, this indicates for example that the battery contains a heavy metal with a content higher than 0.0005% for mercury, or higher than 0.002% for cadmium, or higher than 0.004% for lead.



RoHS2 Declaration of Conformity (LSDEEE2)

This product has been designed and manufactured in compliance with Directive 2011/65/EU of the European Parliament and of the European Council and amendment (EU)2015/863 on the restriction of the use of certain hazardous substances in electrical and electronic equipment (RoHS2 Directive - RoHS2), it is declared to comply with the maximum concentration values defined by the European Technical Adaptation Committee (TAC), which are :

Substance	Proposed maximum concentration	Actual concentration
Lead (Pb)	0,1%	< 0,1%
Mercury (Hg)	0,1%	< 0,1%
Cadmium (Cd)	0,01%	< 0,01%
Chrome hexavalent (Cr6+)	0,1%	< 0,1%
Polybromobiphenyl (PBB)	0,1%	< 0,1%
Polybrominated diphenyl ethers (PBDE)	0,1%	< 0,1%
Bis (2-ethylhexyl) phthalate (DEHP)	0,1%	< 0,1%
Benzyl butyl phthalate (BBP)	0,1%	< 0,1%
Dibutyl phthalate (DBP)	0,1%	< 0,1%
Disobutyl phthalate (DIBP)	0,1%	< 0,1%

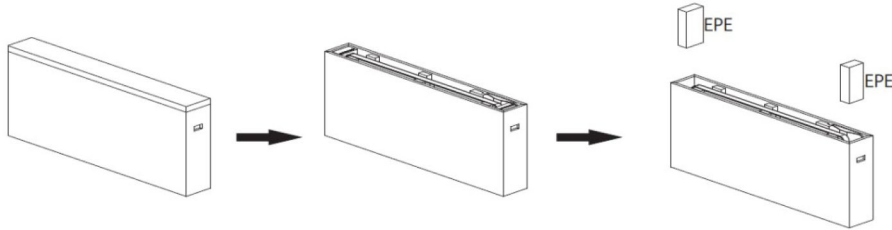
OPENING THE BOX AND ASSEMBLING

List of box contents :

- A vertical digital signage totem pole.
- A floor stand to be assembled to the body with the screws provided.
- A power supply cord, standard European "F" type plug.
- A safety key to open the rear hatch of the totem.
- A remote control.
- A set of screws and washers with an allen key to assemble the stand to the body of the totem.

Opening the box and assembling the Totem (2 people) :

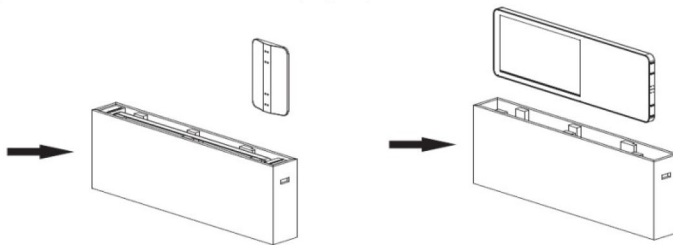
1. Place the box on its edge on a flat surface with the carrying handles facing up (Fig. 1).
2. Open the top cover (Fig. 2).
3. Remove the cushioning blocks from both sides of the box (Fig. 3).
4. Remove the base (Fig. 4).
5. Remove the unit from the carton (Fig. 5) and place it on a flat table previously covered with a soft cloth or bubble wrap to prevent scratching. Check that there is no dust or foreign matter on the table before laying the totem flat (Fig. 6).
6. Carry out a visual inspection of all components.
7. Finally, attach the base to the body with the screws and washers provided and place it on the floor. (fig. 6-7).



(Fig. 1)

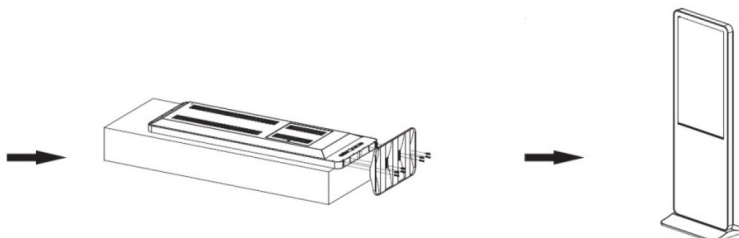
(Fig. 2)

(Fig. 3)



(Fig. 4)

(Fig. 5)



(Fig. 6)

(Fig. 7)

Important :

- a. If the carton was delivered to you damaged (take a picture and do not proceed with unpacking or installation without your dealer's permission).
- b. If there are missing or damaged items in your carton.
- c. If the appliance does not switch on after being plugged in and using the switch (check with another electrical appliance that the wall socket is supplied with power).
- d. If the operation seems abnormal: unstable picture, crackling, burning smell (in this case, immediately turn off the power and unplug from the wall socket)

SAFETY WARNINGS AND PRECAUTIONS

Never attempt to disassemble this unit. If it does not work properly, please contact your dealer or KIMEX International. This appliance has been carefully manufactured and complies with the applicable European standards. However, please observe the following safety instructions carefully.

WARNING : May cause personal injury or death



In the following cases :

- Power failure or unstable voltage.
- Abnormal noise or smell from the unit.
- The digital display is damaged due to a drop or impact.

Turn off the totem

Unplug the power cord from the electrical outlet.



In the following cases :

- The power cord is damaged.
- A liquid or foreign material falls or has fallen on the totem pole.

Unplug the power cord from the electrical outlet.

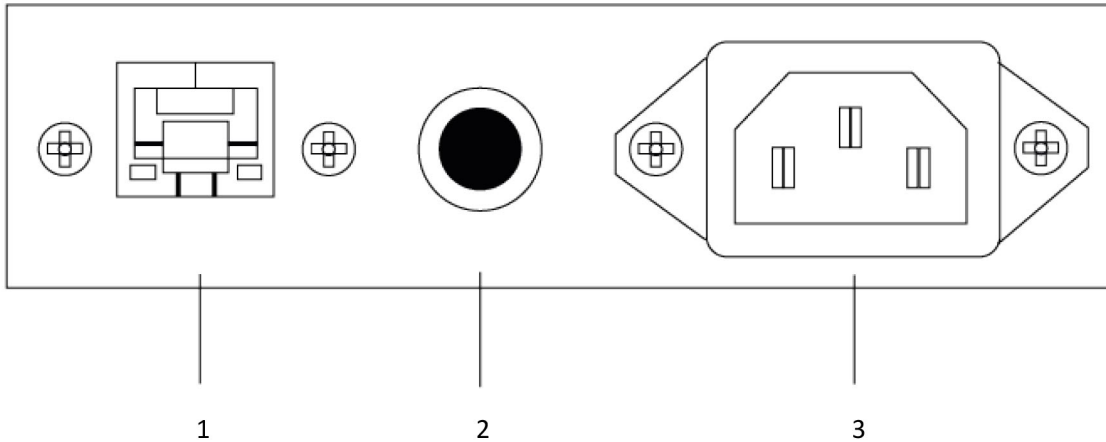
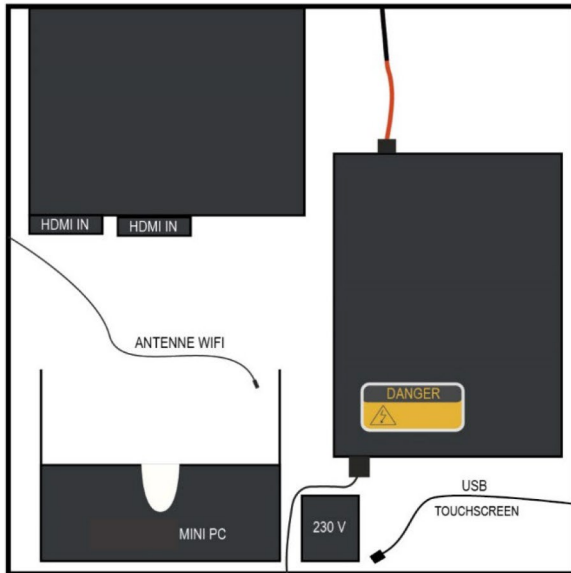


In any case, never open the appliance yourself but call your dealer.

Other precautions and safety measures :

- Do not use any power supply other than 220 / 240 V, 60Hz AC.
- Turn off the totem before plugging or unplugging the wall socket.
- Install the totem on stable, dry ground, out of direct sunlight.
- Environments to avoid :
 - Humidity, extreme temperature (outside the range of 0° ~ 40°C), dust.
 - Flammable or explosive materials.
 - Flammable or corrosive gases.
- Do not connect with a damaged power cable.
- Do not modify the power cord.
- Do not allow dust or metal deposits to adhere to ventilation openings or outlets.
- Do not block any openings / vents in the structure that are designed for ventilation and cooling of your appliance.
- Do not install the back of the appliance closer than 20 cm to a wall to ensure good air circulation.
- Do not turn on the unit immediately when it is moved from a low-temperature location to a high-temperature location or vice versa, as this may produce condensation and cause malfunction.
- Do not place any liquid-filled container on the totem pole to avoid electric shock and fire from dripping or splashing.
- If the appliance is installed in a building without a lightning conductor or earthed electrical installation, do not use the appliance in stormy weather, especially in case of lightning, please unplug the power supply.
- Do not spray liquid directly onto the unit to clean it, use a soft, dust-free cloth instead. If necessary, spray a non-corrosive cleaning agent on a soft cloth and use the slightly damp cloth to clean fingerprints, for example.

CONNECTING AND LINKING



1. RJ45 connector.
2. Switch button: Press to turn on and turn off.
3. Power supply 100-240V (50/60Hz), check the power according to the model : power cable with European "F" type plug, length 1.5 m, 10 A, 1000 W.

Caution :

Only connect the totem to the power supply if it is placed on a stable and dry floor, in an environment as indicated in the technical description and there is no run-off either above the totem, on the floor, along the power cable passage or above the power supply wall socket.

Do not move an appliance connected to the power supply.

The totem pole is a class A device, which means that it can cause radio interference effects in its environment like any other device with a large LCD panel and a Wi-Fi transmission system. It is potentially sensitive to interference from surrounding devices. In this case, please check other equipment installed nearby.

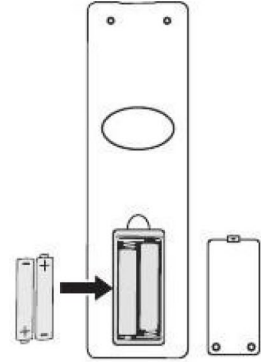
Do not place the Totem in direct sunlight or near a heat source, as this may damage it.

REMOTE CONTROL

Battery installation

- Remove the battery cover on the back of the remote control and insert two AAA (1.5V) batteries. Make sure that the polarity matches the + and - marks on the battery compartment of the remote control.
- Do not use different types of batteries. Never mix new and old batteries. Always replace batteries in pairs.
- Do not burn, charge or disassemble batteries

Never dispose of used batteries with household waste but in the recycling bins provided for this purpose, e.g. in your supermarkets or in accordance with local environmental regulations.



Precautions for using the remote control

- Aim at the infrared receiver located below the right corner of the screen. Do not place any objects between the remote control and the receiver to avoid interference and to ensure normal operation.
- Keep the remote control away from strong vibrations. Do not place the remote control under direct sunlight or on a radiator, as this may deform and damage it.
- The remote control signal may not work if the infrared receiver is exposed to sunlight or strong lighting. In this case, adjust the angle of the lighting on the device or move closer to the receiver.
- The maximum operating distance of the remote control is 5 m, which can be shortened if the battery charge is insufficient, in which case replace the batteries with new ones. If the remote control is not used for a long period of time, remove the batteries to prevent corrosion that could damage the remote control.

